



# Tru180°

**Meet us outside.**





# ► **What is our 180°?**

**To change how we  
inhabit outside.**

With color and comfort.

With sustainable products built to last.

From backyard, patio or porch,  
to the cabin, pool or beach house,  
we are wherever it is you find your truth.



**Meet us outside.**



MADE  
IN  
U.S.A.



Create outdoor spaces you'll love, and find new ways to be outside.

20 minutes outside can give your brain an energy boost roughly equal to a cup of coffee.

So schedule that Zoom call for the patio.



**Sometimes a change in direction can change everything.** Our name is inspired by the moment when we chose a new path in our own lives to found Tru180°. We're proud of what we make, and we're honored to be a part of your outside happy place.

—Arthur Schildgen & Damon Brinson



**Be inspired to find new ways  
to be outside.**

A winter picnic.

A work meeting in shorts.

Band practice in Adirondack chairs.

**Go ahead—your 180° is out there.**

## ADIRONDACK CHAIRS & END TABLES

[pages 12-13]



## GLIDERS & ROCKERS

[pages 14-15]



## TETE-A-TETES, SWINGS & CHAISE LOUNGES

[pages 16-17]



## TABLES & TABLE SEATING

[pages 20-22]



## PICNIC TABLES & BENCHES

[page 23]



## DEEP SEAT COLLECTION

[pages 24-25]



## FIRE TABLES & BOWLS

[pages 18-19]



## ACCESSORIES

[page 26]



## About our materials:

Nature is tough. So is our furniture.

Crafted with durable poly lumber produced from pre- and post-consumer recycled high-density polyethylene (HDPE), such as milk jugs and other single-use plastics, it withstands a lot.

### The *rough* stuff like:

- > moisture
- > salt
- > sun
- > insects
- > fungi
- > environmental stressors
- > corrosive substances
- > oils
- > fuels

### And the *fun* stuff like:

- > red wine
- > chocolate frosting
- > silly putty
- > dog drool

### Additionally:

- + 20-year warranty (See page 27 for details.)
- + No painting or sealing
- + Materials won't splinter or crack
- + UV-resistant, prevents fading
- + Rust-free, stainless-steel hardware
- + Clean with soap and water as needed



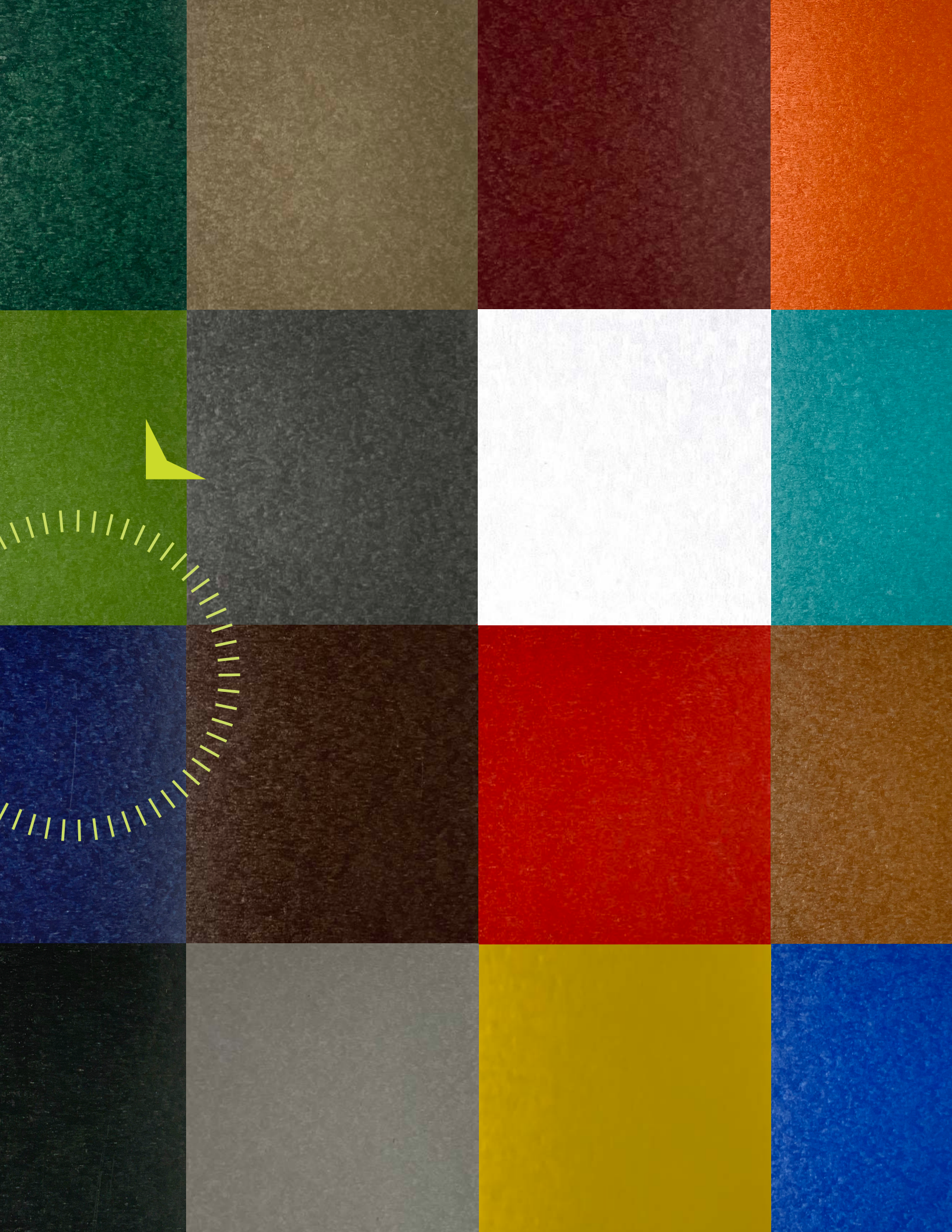


**Here is where it all comes together.**

When you step through our doors, you can sense the spirit of community, united by purpose and a joy in creating good things that last.

## **About our workshop:**

At first light, our Midwestern artisans gather in the workshop—**NOT a factory.** They use traditional methods, passed down from generation to generation. Each piece assembled by hand ensures an intentional **focus on quality rather than quantity.**







#### CUSTOMIZE IT

> COLOR & ENGRAVING Page 11

> Additional cost for Premium colors and engraving.

## Amazing outdoor spaces, punctuated with color.

### ADDITIONALLY:

+ Rich mix-and-match, fade-resistant colors mean hundreds of combinations.

+ Color-saturated boards minimize scuffs and scratches.

+ Added UV stabilizer protects against fade and sun damage.

A red cardinal in the pines.

A white sail on a blue lake.

Pops of color that catch your eye  
and lift your mood.

Our palette lets you create the ideal look for your outside sanctuary. Choose rich wood-inspired hues or bold shades that add a playful splash. Mix-and-match, add an accent, or make it monochrome—  
**welcome to your outside happy place.**

# CUSTOMIZE IT

Make it your own.  
Make a statement. Do what  
brings you to your  
**Tru happiness.**



## STANDARD COLORS

Warm it up



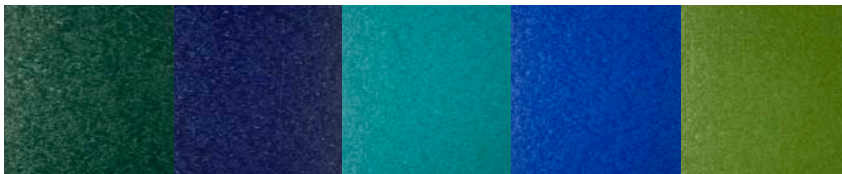
Cherrywood

Tangerine

Rudolph Red

Yellow

Cool it down



Woodland Green

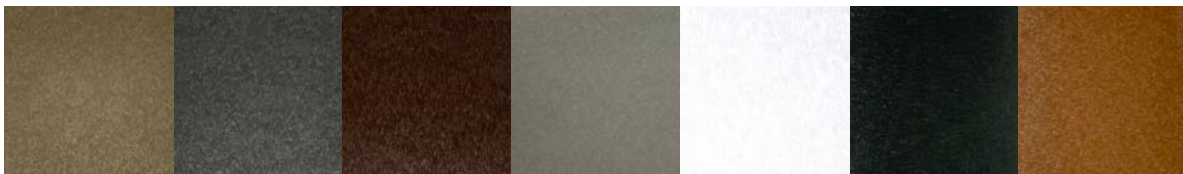
Patriot Blue

Aruba Blue

Burns Blue

Lime Green

Put it in neutral



Weather Wood

Slate

Brown

Light Grey

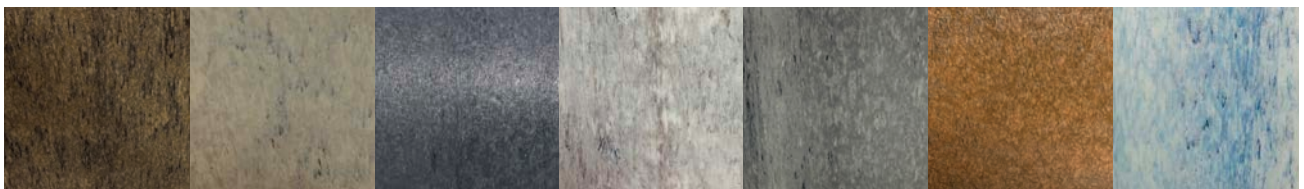
White

Black

Cedar



## PREMIUM COLORS



Barn Board

Speckled Maple

Granite

Marble

Stone

Walnut

Ice Blue

## HAVE FUN WITH COLOR!

1.

Pick a base color from the Standard Colors palette.

2.

Choose an accent color from the Standard or Premium palette.

3.

If you want, add a border—this will be the same as your base color.

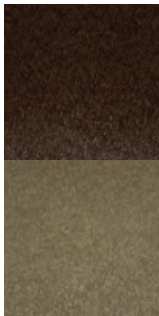


### CUSTOMIZE IT

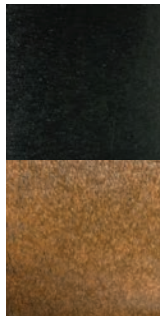
> COLOR & ENGRAVING Page 11

> Additional cost for Premium colors and engraving.

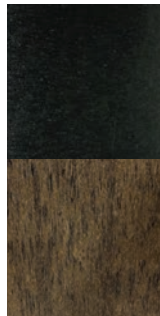
## FAVORITE COMBINATIONS



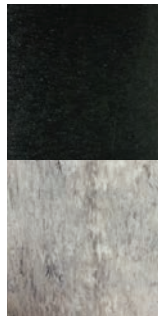
Brown  
+  
Weather Wood



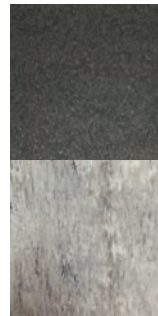
Black  
+  
Walnut



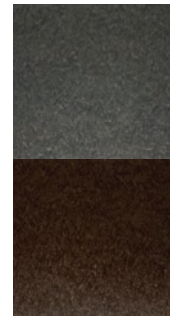
Black  
+  
Barn Board



Black  
+  
Marble



Slate  
+  
Marble



Slate  
+  
Brown

## CUSTOMIZE IT EVEN MORE

Personalize with a family name or crest, or just make it be known that this is “DAD’S CHAIR.”



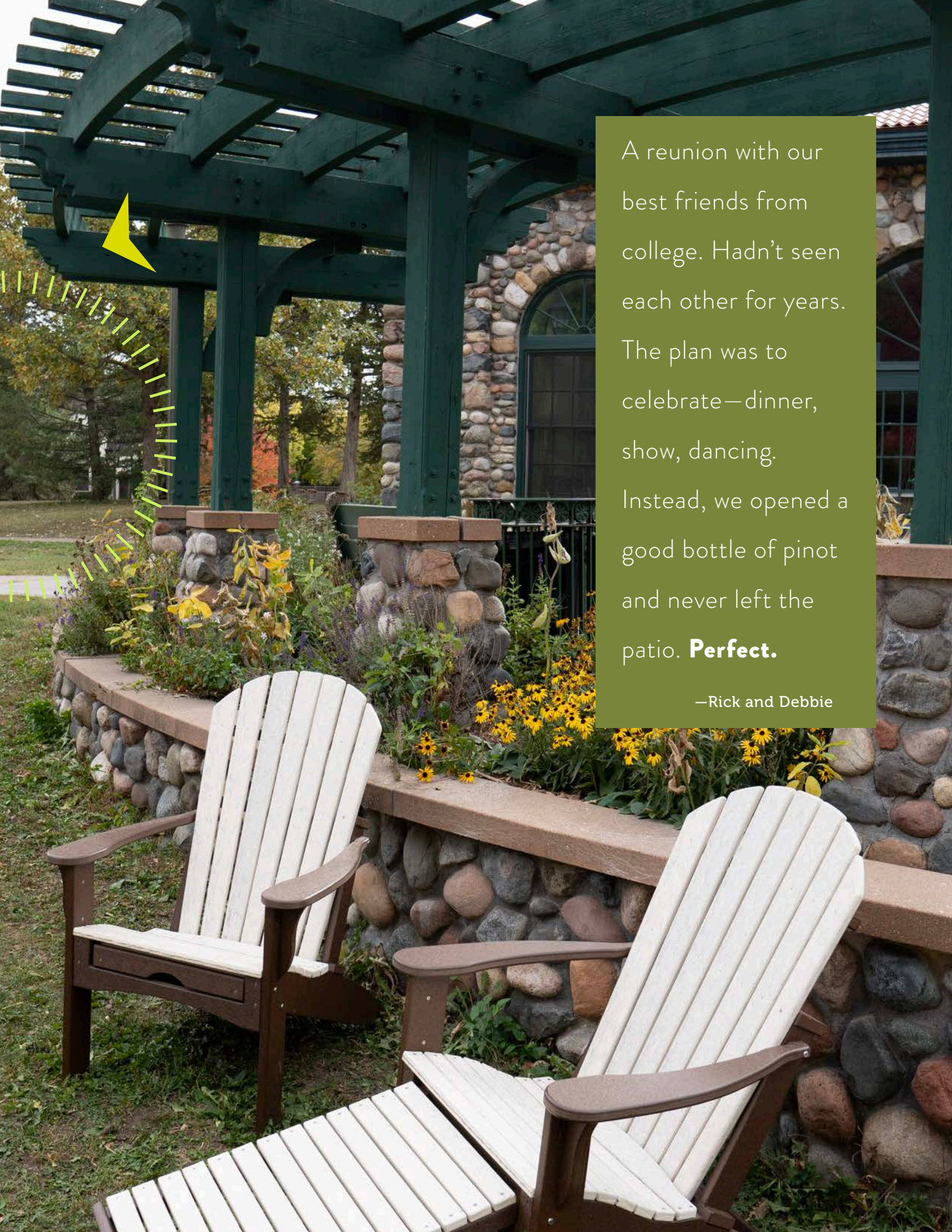
### SUGGESTIONS

+

Logos, names, patterns, animals, hobby images, a dedication, an inspiration, or a favorite quote.

+

Almost any logo or design can be adapted for custom engraving directly onto our furniture.



A reunion with our best friends from college. Hadn't seen each other for years. The plan was to celebrate—dinner, show, dancing. Instead, we opened a good bottle of pinot and never left the patio. **Perfect.**

—Rick and Debbie

# ADIRONDACK CHAIRS

At home in the city, at the lake, poolside, or around the campfire. Always a favorite.

## CUSTOMIZE IT

- > COLOR & ENGRAVING Page 11
- > Additional cost for Premium colors and engraving.



Fan-Back

Fan-Back  
**FOLDING ADIRONDACK**  
CAD001 W 30" D 35" H 38" SH 15" (38 lbs.)



**CONTEMPORARY ADIRONDACK**  
CAD004 W 31" D 32" H 41" SH 18" (41 lbs.)



Scallop-Back

Scallop-Back  
**FOLDING ADIRONDACK**  
CAD001 W 30" D 35" H 38" SH 15" (39 lbs.)

Are all Adirondacks available with a CUPHOLDER?  
**YES!**



**FIXED ADIRONDACK**  
CAD005 W 30" D 32" H 38" SH 17" (41 lbs.)  
Available as Scallop-Back or Fan-Back.

Slideout Ottoman



**ADIRONDACK with Slideout Ottoman**  
CAD003 W 30" D 32" H 38" SH 17" (53.5 lbs.)  
Available as Scallop-Back or Fan-Back.

## FOR THE LITTLE ONES



**CHILDREN'S ADIRONDACK**  
CAD006 W 24" D 27" H 33" SH 15" (30 lbs.)  
Available as Scallop-Back or Fan-Back.

## PAIRS WELL WITH:



**ADIRONDACK OTTOMAN**  
OTT001 W 22" D 25" H 14" (16 lbs.)



**ADIRONDACK HEAD REST**  
CUS004 W 20" H 10" (2.5 lbs.)



**CLASSIC END TABLE WITH BORDER**  
CET001 W 15.25" D 23" H 21" Counter Height  
W 15.25" D 23" H 27" (22 lbs.)



**END TABLE with Cupholders**  
ETC002 W 16" D 18.5" H 21" Counter Height  
W 16" D 18.5" H 28" (22 lbs.)



**— NEW — ROUND END TABLE**  
ETR001 W 21" H 22" Counter Height  
W 21" H 27" (22 lbs.)

**CUSTOMIZE IT**

- > COLOR & ENGRAVING Page 11
- > Additional cost for Premium colors and engraving.

# GLIDERS & ROCKERS

Universally comfortable.  
Ergonomically designed.  
A soothing rhythm. It's like a mini-vacation.

Shown with console down and dual cupholders are standard!

Are all available with a CUPHOLDER?  
**YES!**



Shown with console up for a third seat. (Invite someone over.)



### 2' STRAIGHT GLIDER

GL0002 W 29.25" D 33" H 43" SH 18" (55 lbs.)  
GL0002.CH Counter Height  
W 29.25" D 45" H 49" SH 24" (61 lbs.)  
Both available as Scallop-Back or Fan-Back.

### 4' GLIDER

GL0004 W 53" D 33" H 43" SH 18" (111 lbs.)  
GL0004.CH Counter Height  
W 53" D 45" H 49" SH 24" (124 lbs.)  
Both available as Scallop-Back or Fan-Back.

### 5' GLIDER with console

GL0005 W 65" D 33" H 43" SH 18" (130 lbs.)  
GL0005.CH Counter Height  
W 65" D 45" H 49" SH 24" (146 lbs.)

The counter height gliders in both 4' and 5' sizes have a foot rest for added comfort.



Foot rest + counter height (Great for people with mobility issues.)

### Counter height 2' STRAIGHT GLIDER

GL0002.CH W 29.25" D 45" H 49" SH 24" (61 lbs.)



### CLASSIC ROCKING CHAIR

CHR001 W 29.25" D 32" H 42" SH 19" (43 lbs.)  
Available as Scallop-Back or Fan-Back.



Swivels 360° rotation

**2' SWIVEL GLIDER**  
GLSW02 W 29.5" D 33" H 43" SH 18" (71 lbs.)  
Available as Scallop-Back or Fan-Back.



**GLIDING OTTOMAN**  
GLOT02 W 20" D 18" H 14" (19 lbs.)

PURE HAPPINESS!

Sunlight ups your brain serotonin levels, boosting feelings of well-being.

So have breakfast on the deck with Mom.

Dinner at 8. Reservations at the hottest spot in town. We drove three blocks, looked at each other and laughed, then we headed home. Made popcorn and sat under the stars.

**Our tru happy place.**

—Dan and Stephen



# TETE-A-TETES & SWINGS

Perfect for two.  
Catch up or wind down.  
Time together  
is time well-spent.



## TETE-A-TETE

TAT001.DH Dining Height  
W 74.5" D 32" H 42" SH 18" (92.5 lbs.)  
TAT001.CH Counter Height  
W 74.5" D 36" H 48" SH 24" (97.5 lbs.)  
TAT001.BH Bar Height  
W 74.5" D 36" H 54" SH 30" (107.5 lbs.)  
All available as Scallop-Back or Fan-Back.

## PAIRS WELL WITH:

A BOOK  
A FRIEND  
IN THE SEAT NEXT TO YOU  
A POOL  
A CONVERSATION  
A GREAT SOUNDTRACK



MADE IN  
U.S.A.



## 4' SWING and 6' CHAIN

SW0004 W 53" D 33" H 31" (82 lbs.)  
Available as Scallop-Back or Fan-Back.  
Also available with a cupholder.

— NEW —

## Powder-coated STEEL SWING FRAME

SWF001 W 91" D 70" H 81" (100 lbs.)  
Works with both 4' and 6' Swings.



Shown with console down  
and dual cupholders are standard!



## 5' SWING with Console and 6' CHAIN

SW0005 W 65" D 33" H 31" (92 lbs.)  
All available as Scallop-Back or Fan-Back.

# CHAISE LOUNGES

Get comfortable.  
Soak up the sun  
(but wear sunscreen,)  
or doze off  
in the shade.



Slightly curved back  
and seat.

## CHAISE LOUNGE with Arms

CHL001 W 26" D 84" H 43" SH 13" (43.5 lbs.)  
Available with a cupholder.

Lays completely flat.



## CHAISE LOUNGE

### Without Arms

CHL002  
W 22" D 84" H 43" SH 13"  
(40 lbs.)

### With Arms

CHL003  
W 26" D 84" H 43" SH 13"  
(43.5 lbs.)  
Available with a cupholder.





Outdoorsy smells—  
grass, flowers, trees,  
dirt— are natural  
aromatherapy  
with calming  
effects.


So head out back  
and smell the  
roses.

**PAIRS WELL WITH:**  
DAYDREAMING



**LOVE COLOR?**  
CUSTOMIZE YOUR COLORS

Additional cost for  
Premium colors and engraving.

A black metal fire pit with a log inside, set against a background of autumn trees. The fire pit is made of multiple curved metal bands that form a teardrop shape. A large, dark log is placed on a metal shelf inside the fire pit. The background shows trees with yellow and red leaves, suggesting an autumn setting. The fire pit is on a paved surface.

Spending 2-3 hours per week outside makes people happier with their lives.

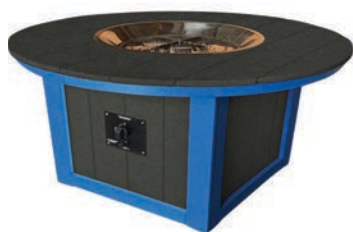
**So get the fire started and invite a crowd over!**

# FIRE TABLES & BOWLS

The warm glow of a flickering fire brings people together. Add in s'mores for a wonderful evening.

## CUSTOMIZE IT

- > COLOR & ENGRAVING Page 11
- > Additional cost for Premium colors and engraving.



### ROUND FIRE TABLE\*

TFR042 42" Round H 27" (165 lbs.)

Base/frame: Any standard color.

Accent/panels: only Slate, Walnut, Marble, or Weather Wood.

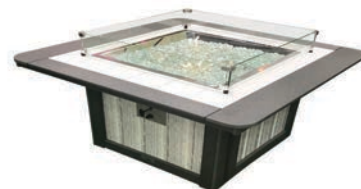
## ADDITIONALLY:

+

Can be fueled with a 20-lb. LP tank.

+

Can also be plumbed into a natural-gas line.



### SQUARE FIRE TABLE\*

TFSQ44 W 44" D 44" H 27" (165 lbs.)

Base/frame: Any standard color.

Accent/panels: only Slate, Walnut, Marble, or Weather Wood.

\* Includes glass gems, glass windguard, and electronic ignition.



### Counter Height FIRE TABLE\*

TF4272.CH W 72" D 42" H 36" (175 lbs.)

Base/frame: Any standard color.

Accent/panels: only Slate, Walnut, Marble, or Weather Wood.



### FIRE BOWL

FB0001 W 29" D 23" H 24" (55 lbs.)

It's more than a Fire Bowl,  
it's a sculpture!  
It's a centerpiece! It's a magnet for  
human togetherness!

Shown at left.

### — NEW — FIRE STAND

FS0001 W 20" D 20" H 36" (40 lbs.)

## PAIRS WELL WITH:

BACKYARD CAMPING

S'MORES

GHOST STORIES

YOUR FAVORITE  
ADULT BEVERAGE

LAUGHTER

FIREFLY WATCHING



LANAI TABLE  
60" x 22"

TL2260.CH Counter Height 36" (64 lbs.)  
TL2260.BH Bar Height 42" (69.5 lbs.)



LANAI STOOL  
16" X 16"

SL0001.CH Counter Height 24" (18 lbs.)  
SL0001.BH Bar Height 30" (19.5 lbs.)



MADE  
FOR  
EACH  
OTHER.



PATIO BAR

BAR001 W 70" D 31" H 42" (171.5 lbs.)  
Frame and side panels in Standard colors only.  
Top can be Standard or Premium colors.

A warm summer night under the stars.  
The one you want to spend the rest of your  
life with. Who needs champagne when  
you can have s'mores? Let's get the

fire started. **Tru love.**

—Lucy and Jonathan

# TABLES

## CUSTOMIZE IT

- > COLOR & ENGRAVING Page 11
- > Additional cost for Premium colors and engraving.

### ADDITIONALLY:

+  
All tables come standard with umbrella hole and color-matching plug.

+  
Many of our tables are available with and without a border.

+  
Borders are great for adding a more finished look, or a pop of color.

Functional design, easy to clean, stain resistant, and durable. For years and years and years.

Without border



### SQUARE PEDESTAL TABLE

40"

#### WITHOUT BORDER

- TSQ040.DH Dining Height 30" (85 lbs.)
- TSQ040.CH Counter Height 36" (88 lbs.)
- TSQ040.BH Bar Height 42" (93.5 lbs.)

With border



### SQUARE TABLES

32"

#### WITHOUT BORDER

- TSQ032.DH Counter Height 30" (48.5 lbs.)
- TSQ032.CH Counter Height 36" (52.5 lbs.)
- TSQ032.BH Bar Height 42" (56 lbs.)

44"

#### WITHOUT BORDER

- TSQ044.DH Dining Height 30" (85 lbs.)
- TSQ044.CH Counter Height 36" (88 lbs.)
- TSQ044.BH Bar Height 42" (93.5 lbs.)

#### WITH BORDER

- TSQB44.DH Dining Height 30" (85 lbs.)
- TSQB44.CH Counter Height 36" (88 lbs.)
- TSQB44.BH Bar Height 42" (93.5 lbs.)



### ROUND TABLES

32"

- TR0032.DH Dining Height 30" (48.5 lbs.)
- TR0032.CH Counter Height 36" (52.5 lbs.)
- TR0032.BH Bar Height 42" (56 lbs.)

36"

- TR0036.DH Dining Height 30" (48.5 lbs.)
- TR0036.CH Counter Height 36" (56 lbs.)
- TR0036.BH Bar Height 42" (59 lbs.)

48"

- TR0048.DH Dining Height 30" (52.5 lbs.)
- TR0048.CH Counter Height 36" (56 lbs.)
- TR0048.BH Bar Height 42" (59 lbs.)

— NEW —

### DOUBLE-PEDESTAL TABLE

TP4284 W 42" D 84"

- TP4284.DH Dining Height 30" (198 lbs.)
- TP4284.CH Counter Height 36" (210 lbs.)
- TP4284.BH Bar Height 42" (222 lbs.)



### RECTANGULAR TABLES

36" X 60"

#### WITHOUT BORDER

- T03660.DH Dining Height 30" (100 lbs.)
- T03660.CH Counter Height 36" (102.5 lbs.)
- T03660.BH Bar Height 42" (105 lbs.)

#### WITH BORDER

- TB3660.DH Dining Height 30" (100 lbs.)
- TB3660.CH Counter Height 36" (102.5 lbs.)
- TB3660.BH Bar Height 42" (105 lbs.)

36" X 72"

#### WITHOUT BORDER

- T03672.DH Dining Height 30" (115 lbs.)
- T03672.CH Counter Height 36" (118 lbs.)
- T03672.BH Bar Height 42" (120 lbs.)

#### WITH BORDER

- TB3672.DH Dining Height 30" (115 lbs.)
- TB3672.CH Counter Height 36" (118 lbs.)
- TB3672.BH Bar Height 42" (120 lbs.)

42" X 60"

#### WITHOUT BORDER

- T04260.DH Dining Height 30" (103 lbs.)
- T04260.CH Counter Height 36" (107.5 lbs.)
- T04260.BH Bar Height 42" (110 lbs.)

#### WITH BORDER

- TB4260.DH Dining Height 30" (103 lbs.)
- TB4260.CH Counter Height 36" (107.5 lbs.)
- TB4260.BH Bar Height 42" (110 lbs.)

42" X 72"

#### WITHOUT BORDER

- T04272.DH Dining Height 30" (123 lbs.)
- T04272.CH Counter Height 36" (126 lbs.)
- T04272.BH Bar Height 42" (128.5 lbs.)

#### WITH BORDER

- TB4272.DH Dining Height 30" (123 lbs.)
- TB4272.CH Counter Height 36" (126 lbs.)
- TB4272.BH Bar Height 42" (128.5 lbs.)

42" X 84"

#### WITHOUT BORDER

- T04284.DH Dining Height 30" (143 lbs.)
- T04284.CH Counter Height 36" (146 lbs.)
- T04284.BH Bar Height 42" (169 lbs.)

#### WITH BORDER

- TB4284.DH Dining Height 30" (143 lbs.)
- TB4284.CH Counter Height 36" (146 lbs.)
- TB4284.BH Bar Height 42" (169 lbs.)

42" X 96"

#### WITHOUT BORDER

- T04296.DH Dining Height 30" (163 lbs.)
- T04296.CH Counter Height 36" (166 lbs.)
- T04296.BH Bar Height 42" (169 lbs.)

#### WITH BORDER

- TB4296.DH Dining Height 30" (163 lbs.)
- TB4296.CH Counter Height 36" (166 lbs.)
- TB4296.BH Bar Height 42" (169 lbs.)



MADE IN U.S.A.

# T A B L E   S E A T I N G

Take a seat. Have a seat.  
Please be seated. An extra seat  
means there's always room for  
one more at the table.

## CHAIRS



### SIDE CHAIR

CS0001.DH Dining Height  
W 19" D 19" H 38" SH 18" (26.5 lbs.)  
CS0001.CH Counter Height  
W 19" D 23" H 44" SH 24" (29 lbs.)  
CS0001.BH Bar Height  
W 19" D 23" H 50" SH 30" (33 lbs.)



### SIDE CHAIR with Arms

CSA001.DH Dining Height  
W 25" D 19" H 38" SH 18" (30 lbs.)  
CSA001.CH Counter Height  
W 25" D 23" H 44" SH 24" (33 lbs.)  
CSA001.BH Bar Height  
W 25" D 23" H 50" SH 30" (36 lbs.)



### COUNTRY SIDE CHAIR

CSC001.DH Dining Height  
W 19" D 19" H 38" SH 18" (29 lbs.)  
CSC001.CH Counter Height  
W 19" D 23" H 44" SH 24" (31 lbs.)  
CSC001.BH Bar Height  
W 19" D 23" H 50" SH 30" (35 lbs.)



### PATIO CHAIR

CPA001.DH Dining Height  
W 29.25" D 27" H 42" SH 18" (39 lbs.)  
CPA001.CH Counter Height  
W 29.25" D 32" H 48" SH 24" (45 lbs.)  
CPA001.BH Bar Height  
W 29.25" D 32" H 54" SH 30" (46 lbs.)

Available as Scallop-Back or Fan-Back.  
Also available with a cupholder.



It swivels!

### PATIO CHAIR with Swivel

CPSW02.DH Dining Height  
W 29.5" D 27" H 42" SH 18" (48 lbs.)  
CPSW02.CH Counter Height  
W 29.5" D 23" H 48" SH 24" (53.5 lbs.)  
CPSW02.BH Bar Height  
W 29.5" D 23" H 54" SH 30" (56 lbs.)

Available as Scallop-Back or Fan-Back.  
Also available with a cupholder.

## STOOLS



### SADDLE STOOL

SS0001.CH Counter Height  
W 19" D 19" H 24" (20 lbs.)  
SS0001.BH Bar Height  
W 19" D 19" H 30" (21.5 lbs.)



### SWIVEL SADDLE STOOL

SSSW01.CH Counter Height  
W 19" D 19" H 24" (25 lbs.)  
SSSW01.BH Bar Height  
W 19" D 19" H 30" (26.5 lbs.)

Both swivel!



### SADDLE STOOL with Back

SS0002.CH Counter Height  
W 19" D 22" H 35" SH 24" (24 lbs.)  
SS0002.BH Bar Height  
W 19" D 22" H 41" SH 30" (25.5 lbs.)



### SWIVEL SADDLE STOOL with Back

SSSW03.CH Counter Height  
W 19" D 22" H 44" SH 24" (29 lbs.)  
SSSW03.BH Bar Height  
W 19" D 22" H 50" SH 30" (30.5 lbs.)



### LANAI STOOL

Shown on page 20.



## STRAIGHT BENCHES

4'

BEN004.DH Dining Height  
W 48" D 15" H 18" (44.5 lbs.)  
BEN004.CH Counter Height  
W 48" D 15" H 24" (50 lbs.)

6'

BEN006.DH Dining Height  
W 72" D 15" H 18" (54.5 lbs.)  
BEN006.CH Counter Height  
W 72" D 15" H 24" (60 lbs.)

8'

BEN008.DH Dining Height  
W 96" D 15" H 18" (64.5 lbs.)  
BEN008.CH Counter Height  
W 96" D 15" H 24" (70 lbs.)



**PAIRS WELL WITH:**

- A TABLETOP TOWER GAME
- A FOUR-IN-A-ROW GAME
- A GAME OF CRIBBAGE  
(Shown on page 26)
- A JIGSAW PUZZLE
- A PIE-EATING CONTEST
- A BOOK CLUB



**CUSTOMIZE IT**

- > COLOR & ENGRAVING Page 11
- > Additional cost for Premium colors and engraving.

# PICNIC TABLES & GARDEN BENCHES

Food, flowers, and friends.  
Pass the sandwiches. Enjoy the daisies.  
There's plenty of room for everyone.



**OCTAGON PICNIC BENCH**  
TPIC08 W 86" D 86" H 30" (262.5 lbs.)  
If a premium color is used, the benches will be the same as base color.



Imagine yourself here.

**GARDEN BENCH**

4'  
BG0004 W 51" D 27" H 36" SH 17.5" (85 lbs.)

5'  
BG0005 W 63" D 27" H 36" SH 17.5" (99 lbs.)



**6' PICNIC TABLE**  
TPIC06 W 72" D 58" H 30" (175 lbs.)



Dolce Oasis

Frequency Sand

Foster Metallic

Berenson Tuxedo

Canvas Logo Red

Cabana Classic

Cast Horizon

Brannon Redwood

Shore Linen

Gateway Mist

Canvas Buttercup

Spectrum Mist



# DEEP SEAT COLLECTION

## CUSTOMIZE IT

- > COLOR & ENGRAVING Page 11
- > Additional cost for Premium colors and engraving.



DEEP SEAT  
**SOFA**

DPSS01 W 80" D 37" H 36" (105 lbs.)

Sink in. Stretch out. Get comfortable, with roomy dimensions and extra cushioning. Just right for a 3-season porch.



DEEP SEAT  
**LOVESEAT**

DPSL01 W 54" D 37" H 36" (86 lbs.)



DEEP SEAT  
**CHAIR**

DPSC01 W 30" D 37" H 36" (54.5 lbs.)



DEEP SEAT  
**SWIVEL CHAIR**

DPSC02 W 30" D 37" H 36" (67 lbs.)



DEEP SEAT  
**COFFEE TABLE**

DPSC11 W 25" D 49" H 19" (55 lbs.)



DEEP SEAT  
**END TABLE**

DPSET1 W 19" D 19" H 24" (27.5 lbs.)



DEEP SEAT  
**OTTOMAN**

DPSOT1 W 28" D 30" H 13" (35 lbs.)

ALSO AVAILABLE,  
ASK FOR DETAILS.

DEEP SEAT  
**CORNER SECTION**

DPSC03



## EASY TO CLEAN

Much like our furniture, our cushions are low maintenance, and can be cleaned with a mild detergent and warm water to treat most stains and spills.

## STEADFAST COLOR

Made with 100% solution-dyed acrylic fiber, our fade-resistant colors will bring a pop of color to any outdoor space.



DEEP SEAT  
**CUSHION SET**

CUS001

Seat: W 24" D 25" Back: W 24" D 20"

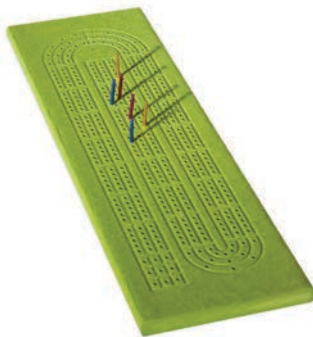


DEEP SEAT  
**OTTOMAN CUSHION**

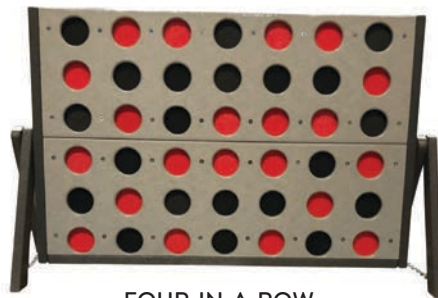
CUS002 W 24" D 25"

# ACCESSORIES

Peg out, slide over, stack up.  
Grab a cold one, plant an herb  
garden. Playing outside  
has never been more fun.



**CRIBBAGE BOARD**  
GCRB01 W 18" D 5.5" (10 lbs.)  
Comes with a set of pegs.



**FOUR-IN-A-ROW  
GAME**  
GC4001 W 33" D 11" H 20.5" (10 lbs.)  
Available in standard colors only.



**TABLETOP  
TOWER GAME**  
GTT001 W 5.5" D 5.5" H 13.5" (8 lbs.)  
Comes with a carrying bag.

## CUSTOMIZE IT

- ▶ COLOR & ENGRAVING Page 11
- ▶ Additional cost for Premium colors and engraving.



**CUP HOLDER**  
ACH001

These will be installed beneath the right armrest unless otherwise specified.

Available in standard colors only.

- ◀ Swivels out of the way (under armrest) when not in use.

## PLANTER BOXES

Base/frame: Any standard color.  
Panels: Only Slate, Walnut, Marble, or Weather Wood.



**12" X 16"**  
PB1216 W 16" D 12" H 10" (18 lbs.)



**12" X 32"**  
PB1232 W 32" D 12" H 10" (26 lbs.)





# Tru180°

## WARRANTY

Tru180° warrants the original purchaser that our high-density polyethylene (HDPE) furniture will be free of original defects in workmanship and materials for a period of twenty years of residential use or two years of commercial use.

At its discretion, Tru180° will repair or replace products without charge for materials and labor.

The spirit of this warranty is to guard against defects within our control. Tru180° guarantees the hardware, swivels, and bearing straps used in our furniture will not fail for five years of residential use or two years of commercial use.



MADE IN U.S.A.

A photograph of two white Adirondack chairs with black frames, positioned in a lush garden. The chairs are the central focus, set against a backdrop of various green plants, including ferns and shrubs, and large grey rocks. In the distance, a path leads through a wooded area with trees showing some autumnal colors. The overall scene is peaceful and inviting, suggesting an outdoor living space.

**Tru180°**  
**Meet us outside.**

**CONTACT US:**

Tru180.net | info@tru180.net  
612.518.0440

150 W. 88th Street Suite 105  
Bloomington, MN 55420